

# screen



*Parasoleil*

# architecture of *light*

Pattern: Lemon Drop [ contemporary ]  
Project: Sheraton Denver (Denver, CO)  
Material: 3/8" aluminum Support: 48" on-center  
Designer: Leo A. Daly



Pattern: custom  
Project: Morrison Park Condominiums  
(Mountain View, CA)  
Material: 1/4" aluminum

Parasoleil has developed a unique line of architectural panels to filter and sculpt light that are not only engineered to withstand the elements, but are profoundly artistic. It's something of a living architectural element that brings form to the ideals and impulses that shape experience.

Pattern: Quiet Wood [ natural ]  
Project: Belcaro Place (Denver, CO)  
Material: 1/4" aluminum  
Support: 48" on-center





Pattern: Quiet Wood [ natural ]  
Project: Office Screen (Denver, CO)  
Material: 1/8" aluminum  
Support: 24" on-center




Pattern: Anderson Ranch [ natural ]  
Project: Globe Arts Center (Globe, AZ)  
Material: 1/4" aluminum



Pattern: Lemon Drop [ contemporary ]  
Project: Larea Residence (Mexico City)  
Material: 1/4" aluminum  
Support: 48" on-center



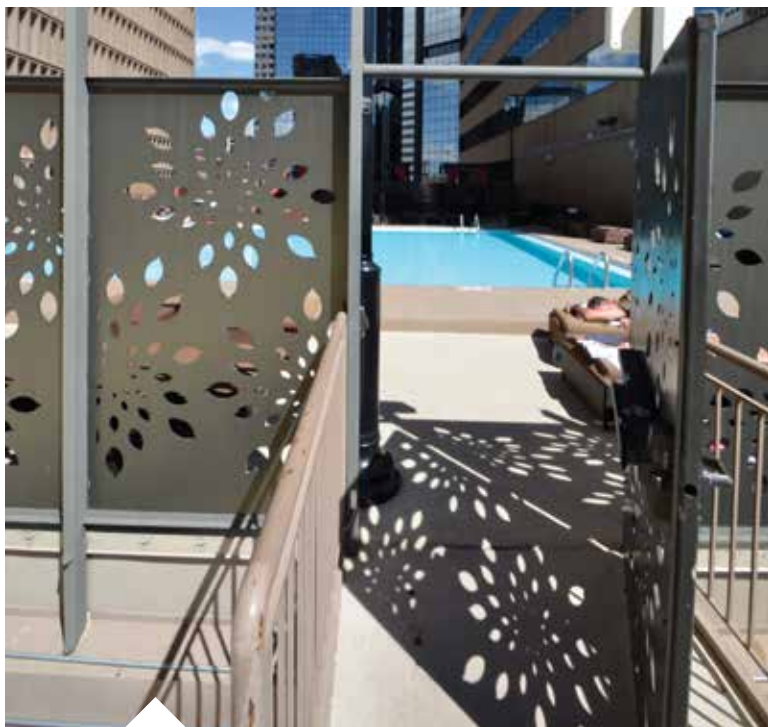
innovation



Designed to last, to inspire, to suit each unique space  
with patterns that are both versatile and structural

Pattern: Custom  
Project: Jim Hamm Nature Area, Bird Blind (Longmont, CO)  
Material: 1/4" aluminum  
Designer: Confluent Design

Pattern: Lemon Drop [ contemporary ]  
Project: City of Lakewood (Lakewood, CA)  
Material: 1/4" aluminum  
Support: 48" on-center



Pattern: Lemon Drop [ contemporary ]  
Project: Sheraton Denver (Denver, CO)  
Material: 3/8" aluminum  
Support: 48" on-center  
Designer: Leo A. Daly

Pattern: Flanigan [ transitional ]  
Project: Room Divider (Austin, TX)  
Material: 16oz copper  
Designer: Kim Lewis Designs



Aesthetic Screen  
With Air Flow

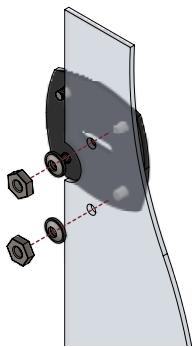
All Season  
Maintenance Free

Pre-Tested  
Standard Products

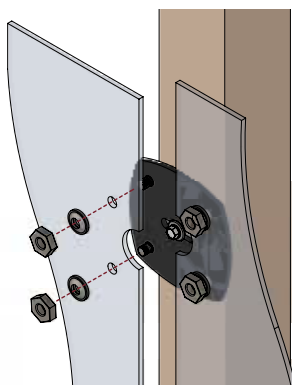
Guided  
Customization

Installation Method	Features					
	Warranty Available From Parasoleil	Built-In Flexibility & Fastener Spacing	Engineering Report Available From Parasoleil	Fasteners & Hardware Available From Parasoleil	Support Frame Included	Corrosion Resistant Assembly
PFL - SERIES HARDWARE	Y	Y	Y*	Y	N	Y
PBI - SERIES HARDWARE	Y	Y	Y*	Y	N	Y
PD - SERIES DRILL SCREWS	Y	N	Y*	Y	N	Y

### PFL - Series Installation Hardware

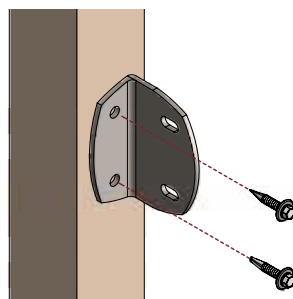


**1** Attach PFL installation hardware to panels using factory cut fastener holes.

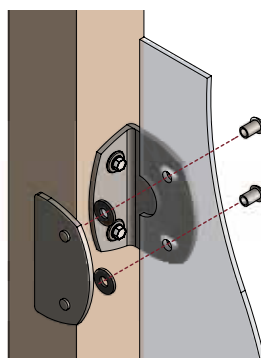


**2** Position panels on supports & secure with PD-Series center anchor. Attach adjacent panel.

### PBI - Series Installation Hardware

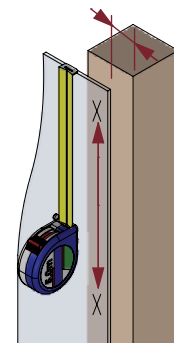


**1** Position and attach PBI hardware base to railing post (by others) using PD-Series drill screws.

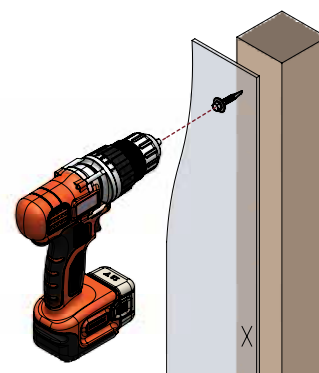


**2** Attach PBI hardware mounting plate and panel assembly to hardware base.

### PD - Series Drill Screws\*\*



**1** Measure & mark fastening points on panel at 8"-10" o.c. and panel position on support post.



**2** Install PD-Series drill screws to secure panel to support posts. Repeat steps 1 and 2 for remaining panels.

\* Contact Parasoleil for complete CSI specifications, installation requirements, recommendations for alternative load conditions and warranty coverage.

\*\* Custom panels without standard factory cut fastener holes are recommended for some direct mount installations.

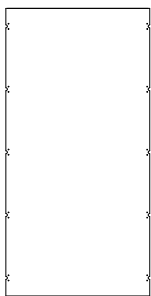
### Standard Panel Material & Warranty

- 5052 H32 Aluminum
- 10 yr. Finish Warranty
- 25 yr. Structural Warranty \*

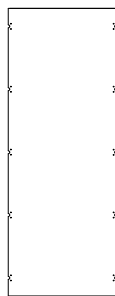
### Standard Panel Weight

- 1/8" = 2 IBS/SF
- 1/4" = 4 IBS/SF

### Standard Panel Sizes - Screen



4' x 8'



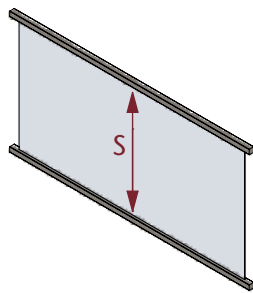
3' x 8'

Custom sizes up to 5' x 10'



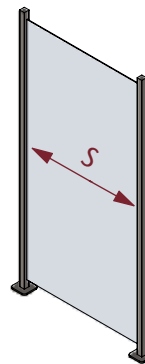
3' x 5'

### Support Configuration Options



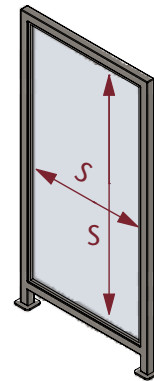
#### Top & Bottom Rail

Panel attached to top and bottom rail only



#### Post to Post

Panel attached to vertical posts only



#### Picture Frame

Panel mounted with continuous perimeter trim element

-1/8" Aluminum: S = 24 - 32" maximum

-1/4" Aluminum: S = 24 - 48" maximum

### Must Read Notes

\* Specify Screen panels' comprehensive assembly using Parasoleil's performed-based CSI specifications. Installation requirements for warranty coverage available by request or web site download. Consult local building department for the most accurate wind load information. Structural capacity of the supports is not considered in the information above and must be examined independently.